

3.2 EPIC® D A - V I N C I H - B

Gehäuse / Hood / Capot

Solide Bauform und ein umfangreiches Programm an passenden Einsätzen sind die markanten Merkmale dieses Gehäuses. Diese Bauform lässt sich aus dem Industriestandard nicht mehr wegdenken. Die Gehäuse der H-B Serie gibt es in sechs verschiedenen Gehäusegrößen.

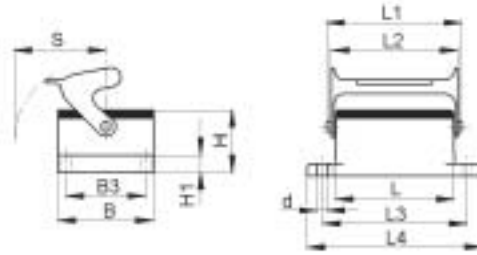
The striking characteristics of these mount bases are a sturdy construction and a comprehensive range of corresponding inserts. This style is used in all industrial applications. The H-B series housings are available in six different sizes.

Une forme de construction solide et un programme important d'inserts adéquats sont les caractéristiques marquantes de ce boîtier. Cette forme de construction est devenue indispensable au standard industriel. Les boîtiers de la série H-B sont disponibles en six tailles différentes.



3.2 EPIC® D A - V I N C I H - B

Anbaugehäuse / Panel mount base / Embase encastrée



EPIC® H-B Gehäuse: Anbaugehäuse (Längsbügel)
EPIC® H-B housings: panel mount base (single locking lever)
Boîtiers EPIC® H-B: embase encastrée (simple levier)

H-B 6

Artikel part article	Art.Nr. part No. N° art.	PG	L	L1	L2	L3	L4	B	B1	B2	B3	B4	B5	H	H1	H2	S	d
H-B 6 AG-LB	10003000		60	74,8	70	70	80	43			32			27,8	4		44	4,3

Einsätze / Inserts / Inserts: 1.4: H-BE 6 / 1.5: H-EE 10 / 1.9: H-DD 24 / 1.10: MC 6 / 1.11: TB H-BE 6
 Deckel / Cover / Couvercle: 6.1: H-B 6

H-B 10

Artikel part article	Art.Nr. part No. N° art.	PG	L	L1	L2	L3	L4	B	B1	B2	B3	B4	B5	H	H1	H2	S	d
H-B 10 AG-LB	10032900		73	91	88,5	83	93	43			32			27,8	4		50	4,3

Einsätze / Inserts / Inserts: 1.4: H-BE 10 / 1.5: H-EE 18 / 1.7: H-BVE 3 / 1.9: H-DD 42 / 1.10: MC 10 / 1.11: TB H-BE 10

H-B 16

Artikel part article	Art.Nr. part No. N° art.	PG	L	L1	L2	L3	L4	B	B1	B2	B3	B4	B5	H	H1	H2	S	d
H-B 16 AG-LB	10072900		93,3	111	109,5	103	113	43			32			27,8	4		50	4,3

Einsätze / Inserts / Inserts: 1.4: H-BE 16 / 1.5: H-EE 32 / 1.6: H-BS 6 / 1.7: H-BVE 6 / 1.8: H-D 40 / 1.9: H-DD 72 / 1.10: MC 16 / 1.11: TB H-BE 16

H-B 24

Artikel part article	Art.Nr. part No. N° art.	PG	L	L1	L2	L3	L4	B	B1	B2	B3	B4	B5	H	H1	H2	S	d
H-B 24 AG-LB	10102900		120	138	136,5	130	140	43			32			27,8	4		50	4,3

Einsätze / Inserts / Inserts: 1.4: H-BE 24 / 1.5: H-EE 46 / 1.7: H-BVE 10 / 1.8: H-D 64 / 1.9: H-DD 108 / 1.10: MC 24 / 1.11: TB H-BE 24

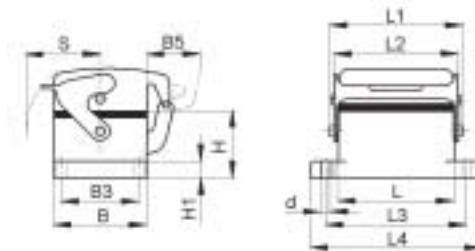
H-B 48

Artikel part article	Art.Nr. part No. N° art.	PG	L	L1	L2	L3	L4	B	B1	B2	B3	B4	B5	H	H1	H2	S	d
H-B 48 AG-LB	10161000		132	152	139,5	148	165	90			70			39,5	10		105	7

Einsätze / Inserts / Inserts: 1.4: H-BE 48 / 1.5: H-EE 92 / 1.7: 2 x H-BVE 10 / 1.8: H-D 128 / 1.9: H-DD 216 / 1.10: 2 x MC 24 / 1.11: 2 x TB H-BE 24 & 2 x TB H-D 64

3.2 EPIC® D A - V I N C I H - B

Anbaugehäuse / Panel mount base / Embase encastrée



EPIC® H-B Gehäuse: Anbaugehäuse (Schutzdeckel, Längsbügel)

EPIC® H-B housings: panel mount base (cover, single locking lever)

Boîtiers EPIC® H-B: embase encastrée (couvercle, simple levier)

H-B 6

Artikel part article	Art.Nr. part No. N° art.	PG	L	L1	L2	L3	L4	B	B1	B2	B3	B4	B5	H	H1	H2	S	d
H-B 6 AD-LB	10004000		60	74,8	70	70	80	43			32		25	27,8	4		44	4,3

Einsätze / Inserts / Inserts: 1.4: H-BE 6 / 1.5: H-EE 10 / 1.9: H-DD 24 / 1.10: MC 6 / 1.11: TB H-BE 6

H-B 10

Artikel part article	Art.Nr. part No. N° art.	PG	L	L1	L2	L3	L4	B	B1	B2	B3	B4	B5	H	H1	H2	S	d
H-B 10 AD-LB	10033900		73	91	88,5	83	93	43			32		25	27,8	4		50	4,3

Einsätze / Inserts / Inserts: 1.4: H-BE 10 / 1.5: H-EE 18 / 1.7: H-BVE 3 / 1.9: H-DD 42 / 1.10: MC 10 / 1.11: TB H-BE 10

H-B 16

Artikel part article	Art.Nr. part No. N° art.	PG	L	L1	L2	L3	L4	B	B1	B2	B3	B4	B5	H	H1	H2	S	d
H-B 16 AD-LB	10073900		93,3	111	109,5	103	113	43			32		25	27,8	4		50	4,3

Einsätze / Inserts / Inserts: 1.4: H-BE 16 / 1.5: H-EE 32 / 1.6: H-BS 6 / 1.7: H-BVE 6 / 1.8: H-D 40 / 1.9: H-DD 72 / 1.10: MC 16 / 1.11: TB H-BE 16

H-B 24

Artikel part article	Art.Nr. part No. N° art.	PG	L	L1	L2	L3	L4	B	B1	B2	B3	B4	B5	H	H1	H2	S	d
H-B 24 AD-LB	10103900		120	138	136,5	130	140	43			32		25	27,8	4		50	4,3

Einsätze / Inserts / Inserts: 1.4: H-BE 24 / 1.5: H-EE 46 / 1.7: H-BVE 10 / 1.8: H-D 64 / 1.9: H-DD 108 / 1.10: MC 24 / 1.11: TB H-BE 24

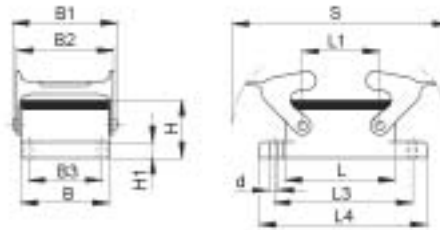
H-B 48

Artikel part article	Art.Nr. part No. N° art.	PG	L	L1	L2	L3	L4	B	B1	B2	B3	B4	B5	H	H1	H2	S	d
H-B 48 AD-LB	10152000		132	152	139,5	148	165	90			70		30	39,5	10		105	7

Einsätze / Inserts / Inserts: 1.4: H-BE 48 / 1.5: H-EE 92 / 1.7: 2 x H-BVE 10 / 1.8: H-D 128 / 1.9: H-DD 216 / 1.10: 2 x MC 24 / 1.11: 2 x TB H-BE 24 & 2 x TB H-D 64

3.2 EPIC® D A - V I N C I H - B

Anbaugehäuse / Panel mount base / Embase encastrée



EPIC® H-B Gehäuse: Anbaugehäuse (Querbügel)
EPIC® H-B housings: panel mount base (double locking lever)
Boîtiers EPIC® H-B: embase encastrée (double levier)

H-B 10

Artikel part article	Art.Nr. part No. N° art.	PG	L	L1	L2	L3	L4	B	B1	B2	B3	B4	B5	H	H1	H2	S	d
H-B 10 AG	10032000		73	27		83	93	43	57,8	53	32			27,8	4		116	4,3

Einsätze / Inserts / Inserts: 1.4: H-BE 10 / 1.5: H-EE 18 / 1.7: H-BVE 3 / 1.9: H-DD 42 / 1.10: MC 10 / 1.11: TB H-BE 10
 Deckel / Cover / Couvercle: 6.1: H-B 10

H-B 16

Artikel part article	Art.Nr. part No. N° art.	PG	L	L1	L2	L3	L4	B	B1	B2	B3	B4	B5	H	H1	H2	S	d
H-B 16 AG	10072000		93,3	47,5		103	113	43	57,8	53	32			27,8	4		136,5	4,3

Einsätze / Inserts / Inserts: 1.4: H-BE 16 / 1.5: H-EE 32 / 1.6: H-BS 6 / 1.7: H-BVE 6 / 1.8: H-D 40 / 1.9: H-DD 72 / 1.10: MC 16 /
 1.11: TB H-BE 16
 Deckel / Cover / Couvercle: 6.1: H-B 16

H-B 24

Artikel part article	Art.Nr. part No. N° art.	PG	L	L1	L2	L3	L4	B	B1	B2	B3	B4	B5	H	H1	H2	S	d
H-B 24 AG	10102000		120	74		130	140	43	57,8	53	32			27,8	4		163	4,3

Einsätze / Inserts / Inserts: 1.4: H-BE 24 / 1.5: H-EE 46 / 1.7: H-BVE 10 / 1.8: H-D 64 / 1.9: H-DD 108 / 1.10: MC 24 /
 1.11: TB H-BE 24
 Deckel / Cover / Couvercle: 6.1: H-B 24

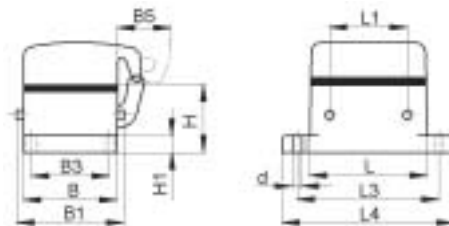
H-B 32

Artikel part article	Art.Nr. part No. N° art.	Art.Nr.: EP part No.: EP N° art.: EP	PG	L	L1	L2	L3	L4	B	B1	B2	B3	B4	B5	H	H1	H2	S	d
H-B 32 AG	10132000			93,5	64,5		110	124	79	93,8	87,8	65			30,3	5		136,5	5,5

Einsätze / Inserts / Inserts: 1.4: H-BE 32 / 1.5: H-EE 64 / 1.6: H-BS 12 / 1.8: H-D 80 / 1.9: H-DD 144 / 1.10: 2 x MC 24 /
 1.11: 2 x TB H-BE 16 & 2 x TB H-D 40

3.2 EPIC® D A - V I N C I H - B

Anbaugehäuse / Panel mount base / Embase encastrée



EPIC® H-B Gehäuse: Anbaugehäuse (Schutzdeckel, Bolzen für Querbügel)

EPIC® H-B housings: panel mount base (cover, bolts for double locking lever)

Boîtiers EPIC® H-B: embase encastrée (couvercle, ergots pour double levier)

H-B 10

Artikel part article	Art.Nr. part No. N° art.	PG	L	L1	L2	L3	L4	B	B1	B2	B3	B4	B5	H	H1	H2	S	d
H-B 10 AD-BO	10033000		73	27		83	93	43	57,8		32		25	27,8	4			4,3

Einsätze / Inserts / Inserts: 1.4: H-BE 10 / 1.5: H-EE 18 / 1.7: H-BVE 3 / 1.9: H-DD 42 / 1.10: MC 10 / 1.11: TB H-BE 10

H-B 16

Artikel part article	Art.Nr. part No. N° art.	PG	L	L1	L2	L3	L4	B	B1	B2	B3	B4	B5	H	H1	H2	S	d
H-B 16 AD-BO	10073000		93,3	47,5		103	113	43	57,8		32		25	27,8	4			4,3

Einsätze / Inserts / Inserts: 1.4: H-BE 16 / 1.5: H-EE 32 / 1.6: H-BS 6 / 1.7: H-BVE 6 / 1.8: H-D 40 / 1.9: H-DD 72 / 1.10: MC 16 / 1.11: TB H-BE 16

H-B 24

Artikel part article	Art.Nr. part No. N° art.	PG	L	L1	L2	L3	L4	B	B1	B2	B3	B4	B5	H	H1	H2	S	d
H-B 24 AD-BO	10103000		120	74		130	140	43	57,8		32		25	27,8	4			4,3

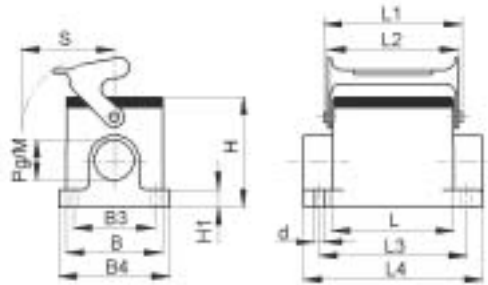
Einsätze / Inserts / Inserts: 1.4: H-BE 24 / 1.5: H-EE 46 / 1.7: H-BVE 10 / 1.8: H-D 64 / 1.9: H-DD 108 / 1.10: MC 24 / 1.11: TB H-BE 24

3.2 EPIC® D A - V I N C I H - B

Sockelgehäuse / Surface mount base / Embase en saillie



PG / M



EPIC® H-B Gehäuse: Sockelgehäuse (2 Kabeleingänge, Längsbügel)
EPIC® H-B housings: surface mount base (2 cable entries, single locking lever)
Boîtiers EPIC® H-B: embase en saillie (2 entrées de câble, simple levier)

H-B 6

Artikel part article	Art.Nr. part No. N° art.	PG	M	L	L1	L2	L3	L4	B	B1	B2	B3	B4	B5	H	H1	H2	S	d
H-B 6 SGRL 16	10006000	16		60	74,8	70	70	84	43			40	52		57	4,5		44	5,5
H-B 6 SGRL M20	19006000		20	60	74,8	70	70	84	43			40	52		57	4,5		44	5,5
H-B 6 SGRL M25	79006600		25																

Einsätze / Inserts / Inserts: 1.4: H-BE 6 / 1.5: H-EE 10 / 1.9: H-DD 24 / 1.10: MC 6

Deckel / Cover / Couvercle: 6.1: H-B 6

Kabelverschraubung / Cable gland / Presse-étoupe: 5.1: Metr. / 5.2: PG / 5.3: Kit

H-B 10

Artikel part article	Art.Nr. part No. N° art.	PG	M	L	L1	L2	L3	L4	B	B1	B2	B3	B4	B5	H	H1	H2	S	d
H-B 10 SGRL-LB 16	10035900	16		73	91	88,5	82	94	43			40	52		57	4,5		50	5,5
H-B 10 SGRL-LB M20	19035900		20	73	91	88,5	82	94	43			40	52		57	4,5		50	5,5
H-B 10 SGRL-LB M25	79061600		25																

Einsätze / Inserts / Inserts: 1.4: H-BE 10 / 1.5: H-EE 18 / 1.7: H-BVE 3 / 1.9: H-DD 42 / 1.10: MC 10

Kabelverschraubung / Cable gland / Presse-étoupe: 5.1: Metr. / 5.2: PG / 5.3: Kit

H-B 16

Artikel part article	Art.Nr. part No. N° art.	PG	M	L	L1	L2	L3	L4	B	B1	B2	B3	B4	B5	H	H1	H2	S	d
H-B 16 SGRL-LB 21	10075900	21		93	111	109,5	105	117	43			45	57		64	4,5		50	5,5
H-B 16 SGRL-LB M25	19075900		25	93	111	109,5	105	117	43			45	57		64	4,5		50	5,5

Einsätze / Inserts / Inserts: 1.4: H-BE 16 / 1.5: H-EE 32 / 1.6: H-BS 6 / 1.7: H-BVE 6 / 1.8: H-D 40 / 1.9: H-DD 72 / 1.10: MC 16

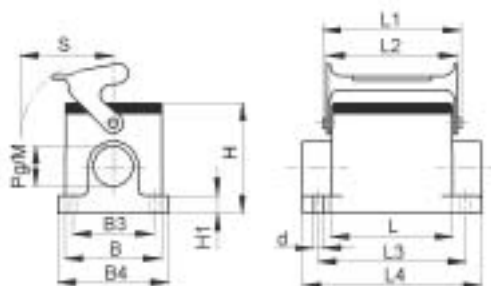
Kabelverschraubung / Cable gland / Presse-étoupe: 5.1: Metr. / 5.2: PG / 5.3: Kit

3.2 EPIC® D A - V I N C I H - B

Sockelgehäuse / Surface mount base / Embase en saillie



PG / M



EPIC® H-B Gehäuse: Sockelgehäuse (2 Kabeleingänge, Längsbügel, hohe Bauform)

EPIC® H-B housings: surface mount base (2 cable entries, single locking lever, high version)

Boîtiers EPIC® H-B: embase en saillie (2 entrées de câble, simple levier, version haute)

H-B 16

Artikel part article	Art.Nr. part No. N° art.	PG	M	L	L1	L2	L3	L4	B	B1	B2	B3	B4	B5	H	H1	H2	S	d	
H-B 16 SGR LH-LB 21	70111200	21		93,3	111	109,5	105	117	43			45	58		84	6		50	5,5	
H-B 16 SGR LH-LB 29	70111400	29																		
H-B 16 SGR LH-LB M25	79111200		25	93,3	111	109,5	105	117	43			45	58		84	6		50	5,5	
H-B 16 SGR LH-LB M32	79111400		32																	

Einsätze / Inserts / Inserts: 1.4: H-BE 16 / 1.5: H-EE 32 / 1.6: H-BS 6 / 1.7: H-BVE 6 / 1.8: H-D 40 / 1.9: H-DD 72 / 1.10: MC 16
Kabelverschraubung / Cable gland / Presse-étoupe: 5.1: Metr. / 5.2: PG / 5.3: Kit

H-B 24

Artikel part article	Art.Nr. part No. N° art.	PG	M	L	L1	L2	L3	L4	B	B1	B2	B3	B4	B5	H	H1	H2	S	d	
H-B 24 SGR LH-LB 21	70161200	21		120	138	136,5	132	144	43			45	58		84	6		50	5,5	
H-B 24 SGR LH-LB 29	70161400	29																		
H-B 24 SGR LH-LB M25	79161200		25	120	138	136,5	132	144	43			45	58		84	6		50	5,5	
H-B 24 SGR LH-LB M32	79161400		32																	

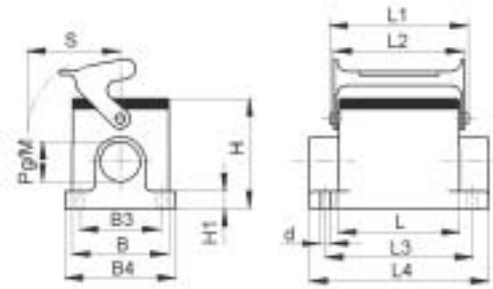
Einsätze / Inserts / Inserts: 1.4: H-BE 24 / 1.5: H-EE 46 / 1.7: H-BVE 10 / 1.8: H-D 64 / 1.9: H-DD 108 / 1.10: MC 24
Kabelverschraubung / Cable gland / Presse-étoupe: 5.1: Metr. / 5.2: PG / 5.3: Kit

3.2 EPIC® D A - V I N C I H - B

Sockelgehäuse / Surface mount base / Embase en saillie



PG / M



EPIC® H-B Gehäuse: Sockelgehäuse (1 Kabeleingang, Längsbügel)

EPIC® H-B housings: surface mount base (1 cable entry, single locking lever)

Boîtiers EPIC® H-B: embase en saillie (1 entrée de câble, simple levier)

H-B 6

Artikel part article	Art.Nr. part No. N° art.	PG	M	L	L1	L2	L3	L4	B	B1	B2	B3	B4	B5	H	H1	H2	S	d
H-B 6 SGR 16	10005000	16		60	74,8	70	70	84	43			40	52		57	4,5		44	5,5
H-B 6 SGR M20	19005000		20	60	74,8	70	70	84	43			40	52		57	4,5		44	5,5
H-B 6 SGR M25	79005600		25																

Einsätze / Inserts / Inserts: 1.4: H-BE 6 / 1.5: H-EE 10 / 1.9: H-DD 24 / 1.10: MC 6

Deckel / Cover / Couvercle: 6.1: H-B 6

Kabelverschraubung / Cable gland / Presse-étoupe: 5.1: Metr. / 5.2: PG / 5.3: Kit

H-B 10

Artikel part article	Art.Nr. part No. N° art.	PG	M	L	L1	L2	L3	L4	B	B1	B2	B3	B4	B5	H	H1	H2	S	d
H-B 10 SGR-LB 16	10034900	16		73	91	88,5	82	94	43			40	52		57	4,5		50	5,5
H-B 10 SGR-LB 21	10034700	21																	
H-B 10 SGR-LB M20	19034900		20	73	91	88,5	82	94	43			40	52		57	4,5		50	5,5
H-B 10 SGR-LB M25	19034700		25																

Einsätze / Inserts / Inserts: 1.4: H-BE 10 / 1.5: H-EE 18 / 1.7: H-BVE 3 / 1.9: H-DD 42 / 1.10: MC 10

Kabelverschraubung / Cable gland / Presse-étoupe: 5.1: Metr. / 5.2: PG / 5.3: Kit

H-B 16

Artikel part article	Art.Nr. part No. N° art.	PG	M	L	L1	L2	L3	L4	B	B1	B2	B3	B4	B5	H	H1	H2	S	d
H-B 16 SGR-LB 21	10074900	21		93	111	109,5	105	117	43			45	57		64	4,5		50	5,5
H-B 16 SGR-LB M25	19074900		25	93	111	109,5	105	117	43			45	57		64	4,5		50	5,5

Einsätze / Inserts / Inserts: 1.4: H-BE 16 / 1.5: H-EE 32 / 1.6: H-BS 6 / 1.7: H-BVE 6 / 1.8: H-D 40 / 1.9: H-DD 72 / 1.10: MC 16

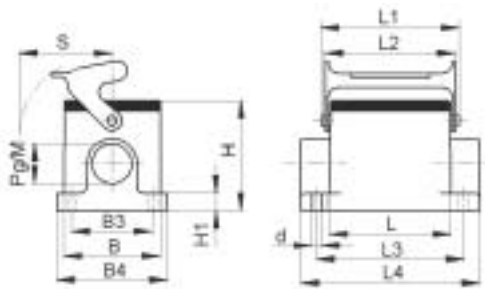
Kabelverschraubung / Cable gland / Presse-étoupe: 5.1: Metr. / 5.2: PG / 5.3: Kit

3.2 EPIC® D A - V I N C I H - B

Sockelgehäuse / Surface mount base / Embase en saillie



PG / M



EPIC® H-B Gehäuse: Sockelgehäuse (1 Kabeleingang, Längsbügel, hohe Bauform)

EPIC® H-B housings: surface mount base (1 cable entry, single locking lever, high version)

Boîtiers EPIC® H-B: embase en saillie (1 entrée de câble, simple levier, version haute)

H-B 16

Artikel part article	Art.Nr. part No. N° art.	PG	M	L	L1	L2	L3	L4	B	B1	B2	B3	B4	B5	H	H1	H2	S	d	
H-B 16 SGRH-LB 21	70110200	21		93,3	111	109,5	105	117	43			45	58		84	6		50	5,5	
H-B 16 SGRH-LB 29	70110400	29																		
H-B 16 SGRH-LB M25	79110200		25	93,3	111	109,5	105	117	43			45	58		84	6		50	5,5	
H-B 16 SGRH-LB M32	79110400		32																	

Einsätze / Inserts / Inserts: 1.4: H-BE 16 / 1.5: H-EE 32 / 1.6: H-BS 6 / 1.7: H-BVE 6 / 1.8: H-D 40 / 1.9: H-DD 72 / 1.10: MC 16
Kabelverschraubung / Cable gland / Presse-étoupe: 5.1: Metr. / 5.2: PG / 5.3: Kit

H-B 24

Artikel part article	Art.Nr. part No. N° art.	PG	M	L	L1	L2	L3	L4	B	B1	B2	B3	B4	B5	H	H1	H2	S	d	
H-B 24 SGRH-LB 21	70160200	21		120	138	136,5	132	144	43			45	58		84	6		50	5,5	
H-B 24 SGRH-LB 29	70160400	29																		
H-B 24 SGRH-LB M25	79160200		25	120	138	136,5	132	144	43			45	58		84	6		50	5,5	
H-B 24 SGRH-LB M32	79160400		32																	

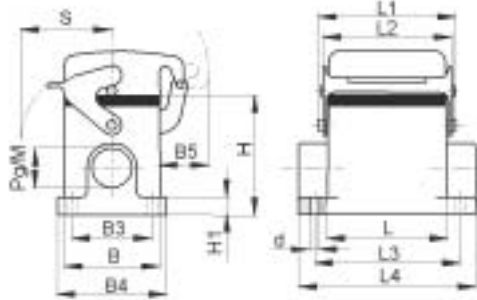
Einsätze / Inserts / Inserts: 1.4: H-BE 24 / 1.5: H-EE 46 / 1.7: H-BVE 10 / 1.8: H-D 64 / 1.9: H-DD 108 / 1.10: MC 24
Kabelverschraubung / Cable gland / Presse-étoupe: 5.1: Metr. / 5.2: PG / 5.3: Kit

3.2 EPIC® D A - V I N C I H - B

Sockelgehäuse / Surface mount base / Embase en saillie



PG / M



EPIC® H-B Gehäuse: Sockelgehäuse (Schutzdeckel, 2 Kabeleingänge, Längsbügel)

EPIC® H-B housings: surface mount base (cover, 2 cable entries, single locking lever)

Boîtiers EPIC® H-B: embase en saillie (couvercle, 2 entrées de câble, simple levier)

H-B 6

Artikel part article	Art.Nr. part No. N° art.	PG	M	L	L1	L2	L3	L4	B	B1	B2	B3	B4	B5	H	H1	H2	S	d
H-B 6 SDRL-LB 16	10009000	16		60	74,8	70	70	84	43			40	52	25	57	4,5		44	5,5
H-B 6 SDRL-LB M20	19009000		20	60	74,8	70	70	84	43			40	52	25	57	4,5		44	5,5
H-B 6 SDRL-LB M25	79016600		25																

Einsätze / Inserts / Inserts: 1.4: H-BE 6 / 1.5: H-EE 10 / 1.9: H-DD 24 / 1.10: MC 6

Kabelverschraubung / Cable gland / Presse-étoupe: 5.1: Metr. / 5.2: PG / 5.3: Kit

H-B 10

Artikel part article	Art.Nr. part No. N° art.	PG	M	L	L1	L2	L3	L4	B	B1	B2	B3	B4	B5	H	H1	H2	S	d
H-B 10 SDRL-LB 16	10038900	16		73	91	88,5	82	94	43			40	52	25	57	4,5		50	5,5
H-B 10 SDRL-LB M20	19038900		20	73	91	88,5	82	94	43			40	52	25	57	4,5		50	5,5
H-B 10 SDRL-LB M25	79065600		25	73	91	88,5	82	94	43			40	52	25	57	4,5		50	5,5

Einsätze / Inserts / Inserts: 1.4: H-BE 10 / 1.5: H-EE 18 / 1.7: H-BVE 3 / 1.9: H-DD 42 / 1.10: MC 10

Kabelverschraubung / Cable gland / Presse-étoupe: 5.1: Metr. / 5.2: PG / 5.3: Kit

H-B 16

Artikel part article	Art.Nr. part No. N° art.	PG	M	L	L1	L2	L3	L4	B	B1	B2	B3	B4	B5	H	H1	H2	S	d
H-B 16 SDRL-LB 21	10078900	21		93	111	109,5	105	117	43			45	57	25	64	4,5		50	5,5
H-B 16 SDRL-LB M25	19078900		25	93	111	109,5	105	117	43			45	57	25	64	4,5		50	5,5

Einsätze / Inserts / Inserts: 1.4: H-BE 16 / 1.5: H-EE 32 / 1.6: H-BS 6 / 1.7: H-BVE 6 / 1.8: H-D 40 / 1.9: H-DD 72 / 1.10: MC 16

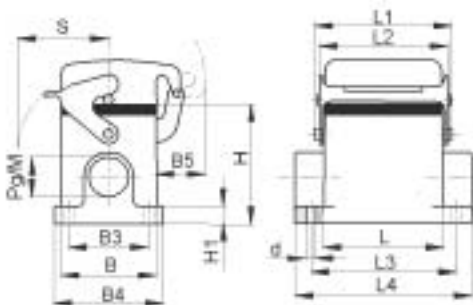
Kabelverschraubung / Cable gland / Presse-étoupe: 5.1: Metr. / 5.2: PG / 5.3: Kit

3.2 EPIC® D A - V I N C I H - B

Sockelgehäuse / Surface mount base / Embase en saillie



PG / M



EPIC® H-B Gehäuse: Sockelgehäuse (Schutzdeckel, 2 Kabeleingänge, Längsbügel, hohe Bauform)

EPIC® H-B housings: surface mount base (cover, 2 cable entries, single locking lever, high version)

Boîtiers EPIC® H-B: embase en saillie (couverture, 2 entrées de câble, simple levier, version haute)

H-B 16

Artikel part article	Art.Nr. part No. N° art.	PG	M	L	L1	L2	L3	L4	B	B1	B2	B3	B4	B5	H	H1	H2	S	d
H-B 16 SDR LH-LB 21	70115200	21		93,3	111	109,5	105	117	43			45	58	25	84	6		50	5,5
H-B 16 SDR LH-LB 29	70115400	29																	
H-B 16 SDR LH-LB M25	79115200		25	93,3	111	109,5	105	117	43			45	58	25	84	6		50	5,5
H-B 16 SDR LH-LB M32	79115400		32																

Einsätze / Inserts / Inserts: 1.4: H-BE 16 / 1.5: H-EE 32 / 1.6: H-BS 6 / 1.7: H-BVE 6 / 1.8: H-D 40 / 1.9: H-DD 72 / 1.10: MC 16
Kabelverschraubung / Cable gland / Presse-étoupe: 5.1: Metr. / 5.2: PG / 5.3: Kit

H-B 24

Artikel part article	Art.Nr. part No. N° art.	PG	M	L	L1	L2	L3	L4	B	B1	B2	B3	B4	B5	H	H1	H2	S	d
H-B 24 SDR LH-LB 21	70165200	21		120	138	136,5	132	144	43			45	58	25	84	6		50	5,5
H-B 24 SDR LH-LB 29	70165400	29																	
H-B 24 SDR LH-LB M25	79165200		25	120	138	136,5	132	144	43			45	58	25	84	6		50	5,5
H-B 24 SDR LH-LB M32	79165400		32																

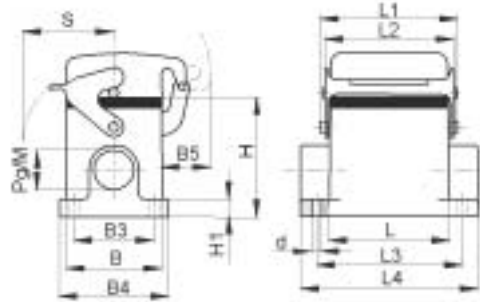
Einsätze / Inserts / Inserts: 1.4: H-BE 24 / 1.5: H-EE 46 / 1.7: H-BVE 10 / 1.8: H-D 64 / 1.9: H-DD 108 / 1.10: MC 24
Kabelverschraubung / Cable gland / Presse-étoupe: 5.1: Metr. / 5.2: PG / 5.3: Kit

3.2 EPIC® D A - V I N C I H - B

Sockelgehäuse / Surface mount base / Embase en saillie



PG / M



EPIC® H-B Gehäuse: Sockelgehäuse (Schutzdeckel, 1 Kabeleingang, Längsbügel)

EPIC® H-B housings: surface mount base (cover, 1 cable entry, single locking lever)

Boîtiers EPIC® H-B: embase en saillie (couvercle, 1 entrée de câble, simple levier)

H-B 6

Artikel part article	Art.Nr. part No. N° art.	PG	M	L	L1	L2	L3	L4	B	B1	B2	B3	B4	B5	H	H1	H2	S	d
H-B 6 SDR 16	10007000	16		60	74,8	70	70	84	43			40	52	25	57	4,5		44	5,5
H-B 6 SDR M20	19007000		20	60	74,8	70	70	84	43			40	52	25	57	4,5		44	5,5
H-B 6 SDR M25	79015600		25																

Einsätze / Inserts / Inserts: 1.4: H-BE 6 / 1.5: H-EE 10 / 1.9: H-DD 24 / 1.10: MC 6
Kabelverschraubung / Cable gland / Presse-étoupe: 5.1: Metr. / 5.2: PG / 5.3: Kit

H-B 10

Artikel part article	Art.Nr. part No. N° art.	PG	M	L	L1	L2	L3	L4	B	B1	B2	B3	B4	B5	H	H1	H2	S	d
H-B 10 SDR-LB 16	10036900	16		73	91	88,5	82	94	43			40	52	25	57	4,5		50	5,5
H-B 10 SDR-LB M20	19036900		20	73	91	88,5	82	94	43			40	52	25	57	4,5		50	5,5
H-B 10 SDR-LB M25	79064600		25																

Einsätze / Inserts / Inserts: 1.4: H-BE 10 / 1.5: H-EE 18 / 1.7: H-BVE 3 / 1.9: H-DD 42 / 1.10: MC 10
Kabelverschraubung / Cable gland / Presse-étoupe: 5.1: Metr. / 5.2: PG / 5.3: Kit

H-B 16

Artikel part article	Art.Nr. part No. N° art.	PG	M	L	L1	L2	L3	L4	B	B1	B2	B3	B4	B5	H	H1	H2	S	d
H-B 16 SDR-LB 21	10076900	21		93	111	109,5	105	117	43			45	57	25	64	4,5		50	5,5
H-B 16 SDR-LB M25	19076900		25	93	111	109,5	105	117	43			45	57	25	64	4,5		50	5,5

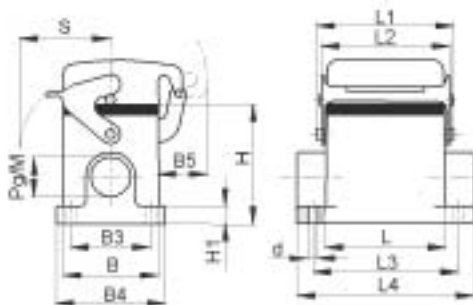
Einsätze / Inserts / Inserts: 1.4: H-BE 16 / 1.5: H-EE 32 / 1.6: H-BS 6 / 1.7: H-BVE 6 / 1.8: H-D 40 / 1.9: H-DD 72 / 1.10: MC 16
Kabelverschraubung / Cable gland / Presse-étoupe: 5.1: Metr. / 5.2: PG / 5.3: Kit

3.2 EPIC® D A - V I N C I H - B

Sockelgehäuse / Surface mount base / Embase en saillie



PG / M



EPIC® H-B Gehäuse: Sockelgehäuse (Schutzdeckel, 1 Kabeleingang, Längsbügel, hohe Bauform)

EPIC® H-B housings: surface mount base (cover, 1 cable entry, single locking lever, high version)

Boîtiers EPIC® H-B: embase en saillie (couverture, 1 entrée de câble, simple levier, version haute)

H-B 16

Artikel part article	Art.Nr. part No. N° art.	PG	M	L	L1	L2	L3	L4	B	B1	B2	B3	B4	B5	H	H1	H2	S	d
H-B 16 SDRH-LB 21	70114200	21		93,3	111	109,5	105	117	43			45	58	25	84	6		50	5,5
H-B 16 SDRH-LB 29	70114400	29																	
H-B 16 SDRH-LB M25	79114200		25	93,3	111	109,5	105	117	43			45	58	25	84	6		50	5,5
H-B 16 SDRH-LB M32	79114400		32																

Einsätze / Inserts / Inserts: 1.4: H-BE 16 / 1.5: H-EE 32 / 1.6: H-BS 6 / 1.7: H-BVE 6 / 1.8: H-D 40 / 1.9: H-DD 72 / 1.10: MC 16
Kabelverschraubung / Cable gland / Presse-étoupe: 5.1: Metr. / 5.2: PG / 5.3: Kit

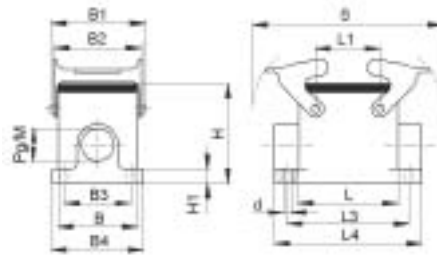
H-B 24

Artikel part article	Art.Nr. part No. N° art.	PG	M	L	L1	L2	L3	L4	B	B1	B2	B3	B4	B5	H	H1	H2	S	d
H-B 24 SDRH-LB 21	70164200	21		120	138	136,5	132	144	43			45	58	25	84	6		50	5,5
H-B 24 SDRH-LB 29	70164400	29																	
H-B 24 SDRH-LB M25	79164200		25	120	138	136,5	132	144	43			45	58	25	84	6		50	5,5
H-B 24 SDRH-LB M32	79164400		32																

Einsätze / Inserts / Inserts: 1.4: H-BE 24 / 1.5: H-EE 46 / 1.7: H-BVE 10 / 1.8: H-D 64 / 1.9: H-DD 108 / 1.10: MC 24
Kabelverschraubung / Cable gland / Presse-étoupe: 5.1: Metr. / 5.2: PG / 5.3: Kit

3.2 EPIC® D A - V I N C I H - B

Sockelgehäuse / Surface mount base / Embase en saillie



PG / M

EPIC® H-B Gehäuse: Sockelgehäuse (2 Kabeleingänge, Querbügel)

EPIC® H-B housings: surface mount base (2 cable entries, double locking lever)

Boîtiers EPIC® H-B: embase en saillie (2 entrées de câble, double levier)

H-B 10

Artikel part article	Art.Nr. part No. N° art.	PG	M	L	L1	L2	L3	L4	B	B1	B2	B3	B4	B5	H	H1	H2	S	d
H-B 10 SGRL 16	10035000		16	73	27		82	94	43	57,8	53	40	52		57	4,5		116	5,5
H-B 10 SGRL M20	19035000		20	73	27		82	94	43	57,8	53	40	52		57	4,5		116	5,5
H-B 10 SGRL M25	19035100		25																

Einsätze / Inserts / Inserts: 1.4: H-BE 10 / 1.5: H-EE 18 / 1.7: H-BVE 3 / 1.9: H-DD 42 / 1.10: MC 10

Deckel / Cover / Couvercle: 6.1: H-B 10

Kabelverschraubung / Cable gland / Presse-étoupe: 5.1: Metr. / 5.2: PG / 5.3: Kit

H-B 16

Artikel part article	Art.Nr. part No. N° art.	PG	M	L	L1	L2	L3	L4	B	B1	B2	B3	B4	B5	H	H1	H2	S	d
H-B 16 SGRL 21	10075000		21	93	47,5		105	117	43	57,8	53	45	57		64	4,5		136,5	5,5
H-B 16 SGRL M25	19075000		25	93	47,5		105	117	43	57,8	53	45	57		64	4,5		136,5	5,5

Einsätze / Inserts / Inserts: 1.4: H-BE 16 / 1.5: H-EE 32 / 1.6: H-BS 6 / 1.7: H-BVE 6 / 1.8: H-D 40 / 1.9: H-DD 72 / 1.10: MC 16

Deckel / Cover / Couvercle: 6.1: H-B 16

Kabelverschraubung / Cable gland / Presse-étoupe: 5.1: Metr. / 5.2: PG / 5.3: Kit

H-B 24

Artikel part article	Art.Nr. part No. N° art.	PG	M	L	L1	L2	L3	L4	B	B1	B2	B3	B4	B5	H	H1	H2	S	d
H-B 24 SGRL 21	10105000		21	120	74		132	144	43	57,8	53	45	57		64	4,5		163	5,5
H-B 24 SGRL M25	19105000		25	120	74		132	144	43	57,8	53	45	57		64	4,5		163	5,5

Einsätze / Inserts / Inserts: 1.4: H-BE 24 / 1.5: H-EE 46 / 1.7: H-BVE 10 / 1.8: H-D 64 / 1.9: H-DD 108 / 1.10: MC 24

Kabelverschraubung / Cable gland / Presse-étoupe: 5.1: Metr. / 5.2: PG / 5.3: Kit

H-B 32

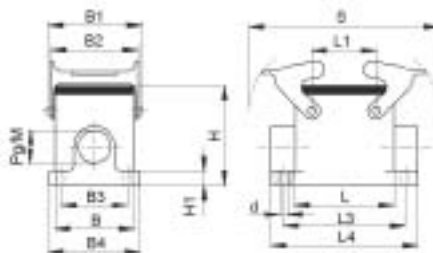
Artikel part article	Art.Nr. part No. N° art.	PG	M	L	L1	L2	L3	L4	B	B1	B2	B3	B4	B5	H	H1	H2	S	d
H-B 32 SGRL 29	10138000		29																
H-B 32 SGRL M32	19138000		32	93,5	64,5		112	124,5	79	93,8	87,8	67	81		72	5		136,5	5,5
H-B 32 SGRL M40	19145400		40																

Einsätze / Inserts / Inserts: 1.4: H-BE 32 / 1.5: H-EE 64 / 1.6: H-BS 12 / 1.8: H-D 80 / 1.9: H-DD 144 / 1.10: 2 x MC 16

Kabelverschraubung / Cable gland / Presse-étoupe: 5.1: Metr. / 5.2: PG / 5.3: Kit

3.2 EPIC® D A - V I N C I H - B

Sockelgehäuse / Surface mount base / Embase en saillie



PG / M

EPIC® H-B Gehäuse: Sockelgehäuse (2 Kabeleingänge, Querbügel, hohe Bauform)

EPIC® H-B housings: surface mount base (2 cable entries, double locking lever, high version)

Boîtiers EPIC® H-B: embase en saillie (2 entrées de câble, double levier, version haute)

H-B 10

Artikel part article	Art.Nr. part No. N° art.	PG	M	L	L1	L2	L3	L4	B	B1	B2	B3	B4	B5	H	H1	H2	S	d
H-B 10 SGR LH 21	70036200	21		73	27		82	97	43	57,8	53	45	58		74	6		116	5,5
H-B 10 SGR LH 29	70036400	29																	
H-B 10 SGR LH M25	79036200		25	73	27		82	97	43	57,8	53	45	58		74	6		116	5,5
H-B 10 SGR LH M32	79036400		32																

Einsätze / Inserts / Inserts: 1.4: H-BE 10 / 1.5: H-EE 18 / 1.7: H-BVE 3 / 1.9: H-DD 42 / 1.10: MC 10

Deckel / Cover / Couvercle: 6.1: H-B 10

Kabelverschraubung / Cable gland / Presse-étoupe: 5.1: Metr. / 5.2: PG / 5.3: Kit

H-B 16

Artikel part article	Art.Nr. part No. N° art.	PG	M	L	L1	L2	L3	L4	B	B1	B2	B3	B4	B5	H	H1	H2	S	d
H-B 16 SGR LH 21	70086200	21		93,3	47,5		105	117	43	57,8	53	45	58		84	6		136,5	5,5
H-B 16 SGR LH 29	70086400	29																	
H-B 16 SGR LH M25	79086200		25	93,3	47,5		105	117	43	57,8	53	45	58		84	6		136,5	5,5
H-B 16 SGR LH M32	79086400		32																

Einsätze / Inserts / Inserts: 1.4: H-BE 16 / 1.5: H-EE 32 / 1.6: H-BS 6 / 1.7: H-BVE 6 / 1.8: H-D 40 / 1.9: H-DD 72 / 1.10: MC 16

Deckel / Cover / Couvercle: 6.1: H-B 16

Kabelverschraubung / Cable gland / Presse-étoupe: 5.1: Metr. / 5.2: PG / 5.3: Kit

H-B 24

Artikel part article	Art.Nr. part No. N° art.	PG	M	L	L1	L2	L3	L4	B	B1	B2	B3	B4	B5	H	H1	H2	S	d
H-B 24 SGR LH 21	70136200	21		120	74		132	144	43	57,8	53	45	58		84	6		163	5,5
H-B 24 SGR LH 29	70136400	29																	
H-B 24 SGR LH M25	79136200		25	120	74		132	144	43	57,8	53	45	58		84	6		163	5,5
H-B 24 SGR LH M32	79136400		32																

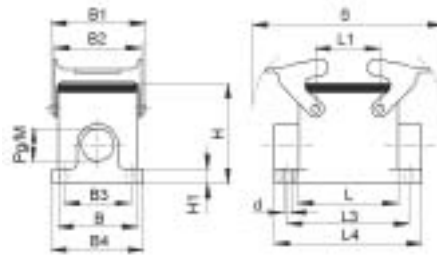
Einsätze / Inserts / Inserts: 1.4: H-BE 24 / 1.5: H-EE 46 / 1.7: H-BVE 10 / 1.8: H-D 64 / 1.9: H-DD 108 / 1.10: MC 24

Deckel / Cover / Couvercle: 6.1: H-B 24

Kabelverschraubung / Cable gland / Presse-étoupe: 5.1: Metr. / 5.2: PG / 5.3: Kit

3.2 EPIC® D A - V I N C I H - B

Sockelgehäuse / Surface mount base / Embase en saillie



PG / M

EPIC® H-B Gehäuse: Sockelgehäuse (1 Kabeleingang, Querbügel)
EPIC® H-B housings: surface mount base (1 cable entry, double locking lever)
Boîtiers EPIC® H-B: embase en saillie (1 entrée de câble, double levier)

H-B 10

Artikel part article	Art.Nr. part No. N° art.	PG	M	L	L1	L2	L3	L4	B	B1	B2	B3	B4	B5	H	H1	H2	S	d
H-B 10 SGR 16	10034000	16		73	27		82	94	43	57,8	53	40	52		57	4,5		116	5,5
H-B 10 SGR M20	19034000		20	73	27		82	94	43	57,8	53	40	52		57	4,5		116	5,5
H-B 10 SGR M25	19034100		25																

Einsätze / Inserts / Inserts: 1.4: H-BE 10 / 1.5: H-EE 18 / 1.7: H-BVE 3 / 1.9: H-DD 42 / 1.10: MC 10

Deckel / Cover / Couvercle: 6.1: H-B 10

Kabelverschraubung / Cable gland / Presse-étoupe: 5.1: Metr. / 5.2: PG / 5.3: Kit

H-B 16

Artikel part article	Art.Nr. part No. N° art.	PG	M	L	L1	L2	L3	L4	B	B1	B2	B3	B4	B5	H	H1	H2	S	d
H-B 16 SGR 21	10074000	21		93	47,5		105	117	43	57,8	53	45	57		64	4,5		136,5	5,5
H-B 16 SGR M25	19074000		25	93	47,5		105	117	43	57,8	53	45	57		64	4,5		136,5	5,5

Einsätze / Inserts / Inserts: 1.4: H-BE 16 / 1.5: H-EE 32 / 1.6: H-BS 6 / 1.7: H-BVE 6 / 1.8: H-D 40 / 1.9: H-DD 72 / 1.10: MC 16

Deckel / Cover / Couvercle: 6.1: H-B 16

Kabelverschraubung / Cable gland / Presse-étoupe: 5.1: Metr. / 5.2: PG / 5.3: Kit

H-B 24

Artikel part article	Art.Nr. part No. N° art.	PG	M	L	L1	L2	L3	L4	B	B1	B2	B3	B4	B5	H	H1	H2	S	d
H-B 24 SGR 21	10104000	21		120	74		132	144	43	57,8	53	45	57		64	4,5		163	5,5
H-B 24 SGR M25	19104000		25	120	74		132	144	43	57,8	53	45	57		64	4,5		163	5,5

Einsätze / Inserts / Inserts: 1.4: H-BE 24 / 1.5: H-EE 46 / 1.7: H-BVE 10 / 1.8: H-D 64 / 1.9: H-DD 108 / 1.10: MC 24

Deckel / Cover / Couvercle: 6.1: H-B 24

Kabelverschraubung / Cable gland / Presse-étoupe: 5.1: Metr. / 5.2: PG / 5.3: Kit

H-B 32

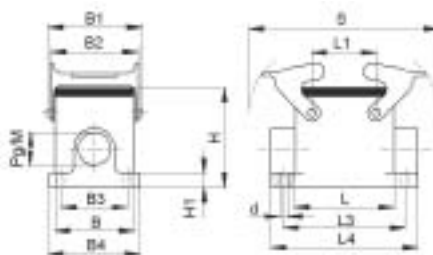
Artikel part article	Art.Nr. part No. N° art.	PG	M	L	L1	L2	L3	L4	B	B1	B2	B3	B4	B5	H	H1	H2	S	d
H-B 32 SGR 29	10137000	29																	
H-B 32 SGR M32	19137000		32	93,5	64,5		112	124,5	79	93,8	87,8	67	81		72	5		136,5	5,5
H-B 32 SGR M40	19146400		40																

Einsätze / Inserts / Inserts: 1.4: H-BE 32 / 1.5: H-EE 64 / 1.6: H-BS 12 / 1.8: H-D 80 / 1.9: H-DD 144 / 1.10: 2 x MC 16

Kabelverschraubung / Cable gland / Presse-étoupe: 5.1: Metr. / 5.2: PG / 5.3: Kit

3.2 EPIC® D A - V I N C I H - B

Sockelgehäuse / Surface mount base / Embase en saillie



PG / M

EPIC® H-B Gehäuse: Sockelgehäuse (1 Kabeleingang, Querbügel, hohe Bauform)

EPIC® H-B housings: surface mount base (1 cable entry, double locking lever, high version)

Boîtiers EPIC® H-B: embase en saillie (1 entrée de câble, double levier, version haute)

H-B 10

Artikel part article	Art.Nr. part No. N° art.	PG	M	L	L1	L2	L3	L4	B	B1	B2	B3	B4	B5	H	H1	H2	S	d
H-B 10 SGRH 21	70035200	21		73	27		82	97	43	57,8	53	45	58		74	6		116	5,5
H-B 10 SGRH 29	70035400	29																	
H-B 10 SGRH M25	79035200		25	73	27		82	97	43	57,8	53	45	58		74	6		116	5,5
H-B 10 SGRH M32	79035400		32																

Einsätze / Inserts / Inserts: 1.4: H-BE 10 / 1.5: H-EE 18 / 1.7: H-BVE 3 / 1.9: H-DD 42 / 1.10: MC 10

Deckel / Cover / Couvercle: 6.1: H-B 10

Kabelverschraubung / Cable gland / Presse-étoupe: 5.1: Metr. / 5.2: PG / 5.3: Kit

H-B 16

Artikel part article	Art.Nr. part No. N° art.	PG	M	L	L1	L2	L3	L4	B	B1	B2	B3	B4	B5	H	H1	H2	S	d
H-B 16 SGRH 21	70085200	21		93,3	47,5		105	117	43	57,8	53	45	58		84	6		136,5	5,5
H-B 16 SGRH 29	70085400	29																	
H-B 16 SGRH M25	79085200		25	93,3	47,5		105	117	43	57,8	53	45	58		84	6		136,5	5,5
H-B 16 SGRHM32	79085400		32																

Einsätze / Inserts / Inserts: 1.4: H-BE 16 / 1.5: H-EE 32 / 1.6: H-BS 6 / 1.7: H-BVE 6 / 1.8: H-D 40 / 1.9: H-DD 72 / 1.10: MC 16

Deckel / Cover / Couvercle: 6.1: H-B 16

Kabelverschraubung / Cable gland / Presse-étoupe: 5.1: Metr. / 5.2: PG / 5.3: Kit

H-B 24

Artikel part article	Art.Nr. part No. N° art.	PG	M	L	L1	L2	L3	L4	B	B1	B2	B3	B4	B5	H	H1	H2	S	d
H-B 24 SGRH 21	70135200	21		120	74		132	144	43	57,8	53	45	58		84	6		163	5,5
H-B 24 SGRH 29	70135400	29																	
H-B 24 SGRH M25	79135200		25	120	74		132	144	43	57,8	53	45	58		84	6		163	5,5
H-B 24 SGRH M32	79135400		32																

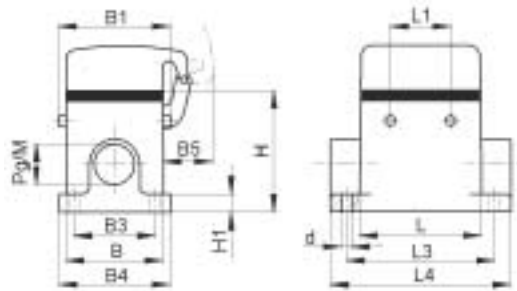
Einsätze / Inserts / Inserts: 1.4: H-BE 24 / 1.5: H-EE 46 / 1.7: H-BVE 10 / 1.8: H-D 64 / 1.9: H-DD 108 / 1.10: MC 24

Deckel / Cover / Couvercle: 6.1: H-B 24

Kabelverschraubung / Cable gland / Presse-étoupe: 5.1: Metr. / 5.2: PG / 5.3: Kit

3.2 EPIC® D A - V I N C I H - B

Sockelgehäuse / Surface mount base / Embase en saillie



PG / M

EPIC® H-B Gehäuse: Sockelgehäuse (Schutzdeckel, 2 Kabeleingänge, Bolzen für Querbügel)
EPIC® H-B housings: surface mount base (cover, 2 cable entries, bolts for double locking lever)
Boîtiers EPIC® H-B: embase en saillie (couvercle, 2 entrées de câble, ergots pour double levier)

H-B 10

Artikel part article	Art.Nr. part No. N° art.	PG	M	L	L1	L2	L3	L4	B	B1	B2	B3	B4	B5	H	H1	H2	S	d
H-B 10 SDRL-BO 16	10038000		16	73	27		82	94	43	57,8		40	52	25	57	4,5			5,5
H-B 10 SDRL-BO M20	19038000		20	73	27		82	94	43	57,8		40	52	25	57	4,5			5,5
H-B 10 SDRL-BO M25	79046600		25																

Einsätze / Inserts / Inserts: 1.4: H-BE 10 / 1.5: H-EE 18 / 1.7: H-BVE 3 / 1.9: H-DD 42 / 1.10: MC 10
 Kabelverschraubung / Cable gland / Presse-étoupe: 5.1: Metr. / 5.2: PG / 5.3: Kit

H-B 16

Artikel part article	Art.Nr. part No. N° art.	PG	M	L	L1	L2	L3	L4	B	B1	B2	B3	B4	B5	H	H1	H2	S	d
H-B 16 SDRL-BO 21	70096000		21	93	47,5		105	117	43	57,8		45	57	25	64	4,5			5,5
H-B 16 SDRL-BO M25	79096000		25	93	47,5		105	117	43	57,8		45	57	25	64	4,5			5,5

Einsätze / Inserts / Inserts: 1.4: H-BE 16 / 1.5: H-EE 32 / 1.6: H-BS 6 / 1.7: H-BVE 6 / 1.8: H-D 40 / 1.9: H-DD 72 / 1.10: MC 16
 Kabelverschraubung / Cable gland / Presse-étoupe: 5.1: Metr. / 5.2: PG / 5.3: Kit

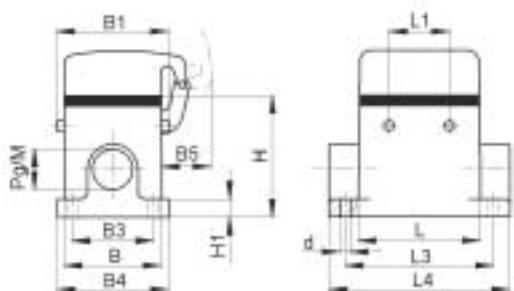
H-B 24

Artikel part article	Art.Nr. part No. N° art.	PG	M	L	L1	L2	L3	L4	B	B1	B2	B3	B4	B5	H	H1	H2	S	d
H-B 24 SDRL-BO 21	10109000		21	120	74		132	144	43	57,8		45	57	25	64	4,5			5,5
H-B 24 SDRL-BO M25	19109000		25	120	74		132	144	43	57,8		45	57	25	64	4,5			5,5

Einsätze / Inserts / Inserts: 1.4: H-BE 24 / 1.5: H-EE 46 / 1.7: H-BVE 10 / 1.8: H-D 64 / 1.9: H-DD 108 / 1.10: MC 24
 Kabelverschraubung / Cable gland / Presse-étoupe: 5.1: Metr. / 5.2: PG / 5.3: Kit

3.2 EPIC® D A - V I N C I H - B

Sockelgehäuse / Surface mount base / Embase en saillie



PG / M

EPIC® H-B Gehäuse: Sockelgehäuse (Schutzdeckel, 2 Kabeleingänge, Bolzen für Querbügel, hohe Bauform)

EPIC® H-B housings: surface mount base (cover, 2 cable entries, bolts for double locking lever, high version)

Boîtiers EPIC® H-B: embase en saillie (covercle, 2 entrées de câble, ergots pour double levier, version haute)

H-B 10

Artikel part article	Art.Nr. part No. N° art.	PG	M	L	L1	L2	L3	L4	B	B1	B2	B3	B4	B5	H	H1	H2	S	d
H-B 10 SDR LH-BO 21	70046200	21		73	27		82	97	43	57,8		45	58	25	74	6			5,5
H-B 10 SDR LH-BO 29	70046400	29																	
H-B 10 SDR LH-BO M25	79046200		25	73	27		82	97	43	57,8		45	58	25	74	6			5,5
H-B 10 SDR LH-BO M32	79046400		32																

Einsätze / Inserts / Inserts: 1.4: H-BE 10 / 1.5: H-EE 18 / 1.7: H-BVE 3 / 1.9: H-DD 42 / 1.10: MC 10

Kabelverschraubung / Cable gland / Presse-étoupe: 5.1: Metr. / 5.2: PG / 5.3: Kit

H-B 16

Artikel part article	Art.Nr. part No. N° art.	PG	M	L	L1	L2	L3	L4	B	B1	B2	B3	B4	B5	H	H1	H2	S	d
H-B 16 SDR LH-BO 21	70096200	21		93,3	47,5		105	117	43	57,8		45	58	25	84	6			5,5
H-B 16 SDR LH-BO 29	70096400	29																	
H-B 16 SDR LH-BO M25	79096200		25	93,3	47,5		105	117	43	57,8		45	58	25	84	6			5,5
H-B 16 SDR LH-BO M32	79096400		32																

Einsätze / Inserts / Inserts: 1.4: H-BE 16 / 1.5: H-EE 32 / 1.6: H-BS 6 / 1.7: H-BVE 6 / 1.8: H-D 40 / 1.9: H-DD 72 / 1.10: MC 16

Kabelverschraubung / Cable gland / Presse-étoupe: 5.1: Metr. / 5.2: PG / 5.3: Kit

H-B 24

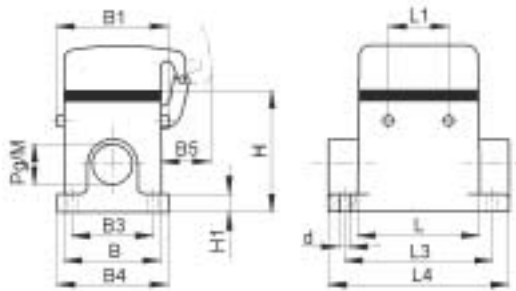
Artikel part article	Art.Nr. part No. N° art.	PG	M	L	L1	L2	L3	L4	B	B1	B2	B3	B4	B5	H	H1	H2	S	d
H-B 24 SDR LH-BO 21	70146200	21		120	74		132	144	43	57,8		45	58	25	84	6			5,5
H-B 24 SDR LH-BO 29	70146400	29																	
H-B 24 SDR LH-BO M25	79146200		25	120	74		132	144	43	57,8		45	58	25	84	6			5,5
H-B 24 SDR LH-BO M32	79146400		32																

Einsätze / Inserts / Inserts: 1.4: H-BE 24 / 1.5: H-EE 46 / 1.7: H-BVE 10 / 1.8: H-D 64 / 1.9: H-DD 108 / 1.10: MC 24

Kabelverschraubung / Cable gland / Presse-étoupe: 5.1: Metr. / 5.2: PG / 5.3: Kit

3.2 EPIC® D A - V I N C I H - B

Sockelgehäuse / Surface mount base / Embase en saillie



PG / M

EPIC® H-B Gehäuse: Sockelgehäuse (Schutzdeckel, 1 Kabeleingang, Bolzen für Querbügel)
EPIC® H-B housings: surface mount base (cover, 1 cable entry, bolts for double locking lever)
Boîtiers EPIC® H-B: embase en saillie (couvercle, 1 entrée de câble, ergots pour double levier)

H-B 10

Artikel part article	Art.Nr. part No. N° art.	PG	M	L	L1	L2	L3	L4	B	B1	B2	B3	B4	B5	H	H1	H2	S	d
H-B 10 SDR-BO 16	10036000		16	73	27		82	94	43	57,8		40	52	25	57	4,5			5,5
H-B 10 SDR-BO M20	19036000		20	73	27		82	94	43	57,8		40	52	25	57	4,5			5,5
H-B 10 SDR-BO M25	19036100		25																

Einsätze / Inserts / Inserts: 1.4: H-BE 10 / 1.5: H-EE 18 / 1.7: H-BVE 3 / 1.9: H-DD 42 / 1.10: MC 10
 Kabelverschraubung / Cable gland / Presse-étoupe: 5.1: Metr. / 5.2: PG / 5.3: Kit

H-B 16

Artikel part article	Art.Nr. part No. N° art.	PG	M	L	L1	L2	L3	L4	B	B1	B2	B3	B4	B5	H	H1	H2	S	d
H-B 16 SDR-BO 21	10076000		21	93	47,5		105	117	43	57,8		45	57	25	64	4,5			5,5
H-B 16 SDR-BO M25	19076000		25	93	47,5		105	117	43	57,8		45	57	25	64	4,5			5,5

Einsätze / Inserts / Inserts: 1.4: H-BE 16 / 1.5: H-EE 32 / 1.6: H-BS 6 / 1.7: H-BVE 6 / 1.8: H-D 40 / 1.9: H-DD 72 / 1.10: MC 16
 Kabelverschraubung / Cable gland / Presse-étoupe: 5.1: Metr. / 5.2: PG / 5.3: Kit

H-B 24

Artikel part article	Art.Nr. part No. N° art.	PG	M	L	L1	L2	L3	L4	B	B1	B2	B3	B4	B5	H	H1	H2	S	d
H-B 24 SDR-BO 21	10107000		21	120	74		132	144	43	57,8		45	57	25	64	4,5			5,5
H-B 24 SDR-BO M25	19107000		25	120	74		132	144	43	57,8		45	57	25	64	4,5			5,5

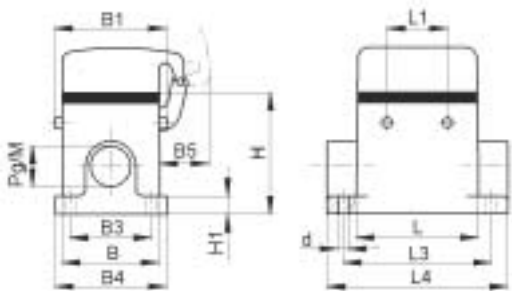
Einsätze / Inserts / Inserts: 1.4: H-BE 24 / 1.5: H-EE 46 / 1.7: H-BVE 10 / 1.8: H-D 64 / 1.9: H-DD 108 / 1.10: MC 24
 Kabelverschraubung / Cable gland / Presse-étoupe: 5.1: Metr. / 5.2: PG / 5.3: Kit

3.2 EPIC® D A - V I N C I H - B

Sockelgehäuse / Surface mount base / Embase en saillie



PG / M



EPIC® H-B Gehäuse: Sockelgehäuse (Schutzdeckel, 1 Kabeleingang, Bolzen für Querbügel, hohe Bauform)
EPIC® H-B housings: surface mount base (cover, 1 cable entry, bolts for double locking lever, high version)
Boîtiers EPIC® H-B: embase en saillie (covercle, 1 entrée de câble, ergots pour double levier, version haute)

H-B 10

Artikel part article	Art.Nr. part No. N° art.	PG	M	L	L1	L2	L3	L4	B	B1	B2	B3	B4	B5	H	H1	H2	S	d
H-B 10 SDRH-BO 21	70045200	21		73	27		82	97	43	57,8		45	58	25	74	6			5,5
H-B 10 SDRH-BO 29	70045400	29																	
H-B 10 SDRH-BO M25	79045200		25	73	27		82	97	43	57,8		45	58	25	74	6			5,5
H-B 10 SDRH-BO M32	79045400		32																

Einsätze / Inserts / Inserts: 1.4: H-BE 10 / 1.5: H-EE 18 / 1.7: H-BVE 3 / 1.9: H-DD 42 / 1.10: MC 10
 Kabelverschraubung / Cable gland / Presse-étoupe: 5.1: Metr. / 5.2: PG / 5.3: Kit

H-B 16

Artikel part article	Art.Nr. part No. N° art.	PG	M	L	L1	L2	L3	L4	B	B1	B2	B3	B4	B5	H	H1	H2	S	d
H-B 16 SDRH-BO 21	70095200	21		93,3	47,5		105	117	43	57,8		45	58	25	84	6			5,5
H-B 16 SDRH-BO 29	70095400	29																	
H-B 16 SDRH-BO M25	79095200		25	93,3	47,5		105	117	43	57,8		45	58	25	84	6			5,5
H-B 16 SDRH-BO M32	79095400		32																

Einsätze / Inserts / Inserts: 1.4: H-BE 16 / 1.5: H-EE 32 / 1.6: H-BS 6 / 1.7: H-BVE 6 / 1.8: H-D 40 / 1.9: H-DD 72 / 1.10: MC 16
 Kabelverschraubung / Cable gland / Presse-étoupe: 5.1: Metr. / 5.2: PG / 5.3: Kit

H-B 24

Artikel part article	Art.Nr. part No. N° art.	PG	M	L	L1	L2	L3	L4	B	B1	B2	B3	B4	B5	H	H1	H2	S	d
H-B 24 SDRH-BO 21	70145200	21		120	74		132	144	43	57,8		45	58	25	84	6			5,5
H-B 24 SDRH-BO 29	70145400	29																	
H-B 24 SDRH-BO M25	79145200		25	120	74		132	144	43	57,8		45	58	25	84	6			5,5
H-B 24 SDRH-BO M32	79145400		32																

Einsätze / Inserts / Inserts: 1.4: H-BE 24 / 1.5: H-EE 46 / 1.7: H-BVE 10 / 1.8: H-D 64 / 1.9: H-DD 108 / 1.10: MC 24
 Kabelverschraubung / Cable gland / Presse-étoupe: 5.1: Metr. / 5.2: PG / 5.3: Kit

3.2 EPIC® D A - V I N C I H - B

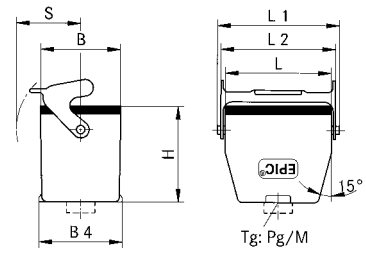
Kupplungsgehäuse / Cable coupler hood / Capot prolongateur



PG



M



EPIC® H-B Gehäuse: Kupplungsgehäuse (Kabeleingang gerade, Längsbügel)

EPIC® H-B housings: cable coupler hood (top entry, single locking lever)

Boîtiers EPIC® H-B: capot prolongateur (sortie verticale, simple levier)

H-B 16

Artikel part article	Art.Nr. part No. N° art.	PG	M	ZW	L	L1	L2	L3	L4	B	B1	B2	B3	B4	B5	H	H1	H2	S	d
H-B 16 TBF-LB 21	10086900	21		●	93,3	111	109,5			43						63,5			50	
H-B 16 TBF-LB M25	19086900		25		93,3	111	109,5			43						63,5			50	

Einsätze / Inserts / Inserts: 1.4: H-BE 16 / 1.5: H-EE 32 / 1.6: H-BS 6 / 1.7: H-BVE 6 / 1.8: H-D 40 / 1.9: H-DD 72 / 1.10: MC 16
Kabelverschraubung / Cable gland / Presse-étoupe: 5.1: Metr. / 5.2: PG / 5.3: Kit

H-B 24

Artikel part article	Art.Nr. part No. N° art.	PG	M	ZW	L	L1	L2	L3	L4	B	B1	B2	B3	B4	B5	H	H1	H2	S	d
H-B 24 TBF-LB 21	10127900	21		●	120	138	136,5			43						63,8			50	
H-B 24 TBF-LB 29	10117900	29		●	120	138	136,5			43						63,8			50	
H-B 24 TBF-LB M25	19127900		25		120	138	136,5			43						63,8			50	
H-B 24 TBF-LB M32	19117900		32		120	138	136,5			43						63,8			50	

Einsätze / Inserts / Inserts: 1.4: H-BE 24 / 1.5: H-EE 46 / 1.7: H-BVE 10 / 1.8: H-D 64 / 1.9: H-DD 108 / 1.10: MC 24
Kabelverschraubung / Cable gland / Presse-étoupe: 5.1: Metr. / 5.2: PG / 5.3: Kit

3.2 EPIC® D A - V I N C I H - B

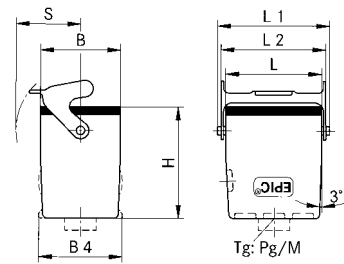
Kupplungsgehäuse / Cable coupler hood / Capot prolongateur



PG



M



EPIC® H-B Gehäuse: Kupplungsgehäuse (Kabeleingang gerade, Längsbügel, hohe Bauform)

EPIC® H-B housings: cable coupler hood (top entry, single locking lever, high version)

Boîtiers EPIC® H-B: capot prolongateur (sortie verticale, simple levier, version haute)

H-B 16

Artikel part article	Art.Nr. part No. N° art.	PG	M	ZW	L	L1	L2	L3	L4	B	B1	B2	B3	B4	B5	H	H1	H2	S	d
H-B 16 TBFH-LB 21	70092200	21		●	93,3	111	109,5			43						78,8			50	
H-B 16 TBFH-LB 29	70092400	29		●																
H-B 16 TBFH-LB M25	79092200		25		93,3	111	109,5			43						78,8			50	
H-B 16 TBFH-LB M32	79092400		32																	

Einsätze / Inserts / Inserts: 1.4: H-BE 16 / 1.5: H-EE 32 / 1.6: H-BS 6 / 1.7: H-BVE 6 / 1.8: H-D 40 / 1.9: H-DD 72 / 1.10: MC 16
 Kabelverschraubung / Cable gland / Presse-étoupe: 5.1: Metr. / 5.2: PG / 5.3: Kit

H-B 24

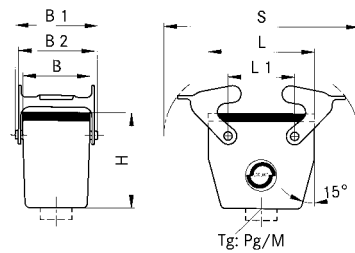
Artikel part article	Art.Nr. part No. N° art.	PG	M	ZW	L	L1	L2	L3	L4	B	B1	B2	B3	B4	B5	H	H1	H2	S	d
H-B 24 TBFH-LB 21	70142400	21		●	120	138	136,5			43						78,8			50	
H-B 24 TBFH-LB 29	70142600	29		●																
H-B 24 TBFH-LB M25	79142400		25		120	138	136,5			43						78,8			50	
H-B 24 TBFH-LB M32	79142600		32																	

Einsätze / Inserts / Inserts: 1.4: H-BE 24 / 1.5: H-EE 46 / 1.7: H-BVE 10 / 1.8: H-D 64 / 1.9: H-DD 108 / 1.10: MC 24
 Kabelverschraubung / Cable gland / Presse-étoupe: 5.1: Metr. / 5.2: PG / 5.3: Kit



3.2 EPIC® D A - V I N C I H - B

Kupplungsgehäuse / Cable coupler hood / Capot prolongateur



EPIC® H-B Gehäuse: Kupplungsgehäuse (Kabeleingang gerade, Querbügel)

EPIC® H-B housings: cable coupler hood (top entry, double locking lever)

Boîtiers EPIC® H-B: capot prolongateur (sortie verticale, double levier)

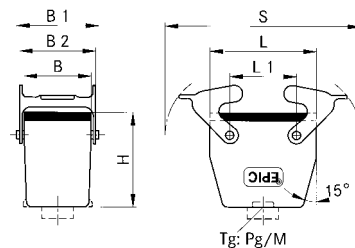
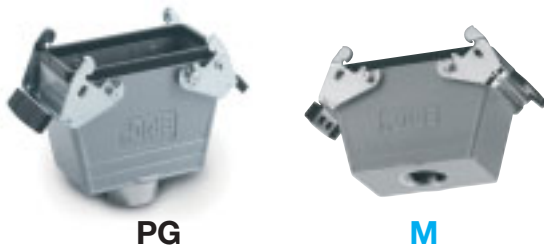
H-B 10

Artikel part article	Art.Nr. part No. N° art.	PG	M	ZW	L	L1	L2	L3	L4	B	B1	B2	B3	B4	B5	H	H1	H2	S	d
H-B 10 TBF 16	10046000	16	●		73	27				43	57,8	53				54,8				116
H-B 10 TBF 21	70040200	21	●																	
H-B 10 TBF M20	19046000			20	73	27				43	57,8	53				54,8				116
H-B 10 TBF M25	79040200			25																

Einsätze / Inserts / Inserts: 1.4: H-BE 10 / 1.5: H-EE 18 / 1.7: H-BVE 3 / 1.9: H-DD 42 / 1.10: MC 10

Deckel / Cover / Couverture: 6.1: H-B 10

Kabelverschraubung / Cable gland / Presse-étoupe: 5.1: Metr. / 5.2: PG / 5.3: Kit



H-B 16

Artikel part article	Art.Nr. part No. N° art.	PG	M	ZW	L	L1	L2	L3	L4	B	B1	B2	B3	B4	B5	H	H1	H2	S	d
H-B 16 TBF 21	10086000	21	●		93,3	47,5				43	57,8	53				63,6				136,5
H-B 16 TBF M25	19086000			25	93,3	47,5				43	57,8	53				63,6				136,5

Einsätze / Inserts / Inserts: 1.4: H-BE 16 / 1.5: H-EE 32 / 1.6: H-BS 6 / 1.7: H-BVE 6 / 1.8: H-D 40 / 1.9: H-DD 72 / 1.10: MC 16

Deckel / Cover / Couverture: 6.1: H-B 16

Kabelverschraubung / Cable gland / Presse-étoupe: 5.1: Metr. / 5.2: PG / 5.3: Kit

H-B 24

Artikel part article	Art.Nr. part No. N° art.	PG	M	ZW	L	L1	L2	L3	L4	B	B1	B2	B3	B4	B5	H	H1	H2	S	d
H-B 24 TBF 21	10127000	21	●		120	74				43	57,8	53				63,8				163
H-B 24 TBF 29	10117000	29	●																	
H-B 24 TBF M25	19127000			25	120	74				43	57,8	53				63,8				163
H-B 24 TBF M32	19117000			32																

Einsätze / Inserts / Inserts: 1.4: H-BE 24 / 1.5: H-EE 46 / 1.7: H-BVE 10 / 1.8: H-D 64 / 1.9: H-DD 108 / 1.10: MC 24

Deckel / Cover / Couverture: 6.1: H-B 24

Kabelverschraubung / Cable gland / Presse-étoupe: 5.1: Metr. / 5.2: PG / 5.3: Kit

3.2 EPIC® D A - V I N C I H - B

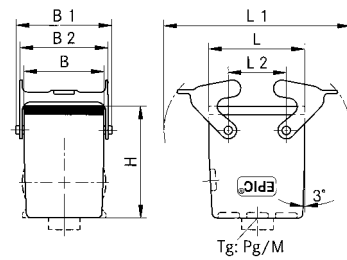
Kupplungsgehäuse / Cable coupler hood / Capot prolongateur



PG



M



EPIC® H-B Gehäuse: Kupplungsgehäuse (Kabeleingang gerade, Querbügel, hohe Bauform)

EPIC® H-B housings: cable coupler hood (top entry, double locking lever, high version)

Boîtiers EPIC® H-B: capot prolongateur (sortie verticale, double levier, version haute)

H-B 10

Artikel part article	Art.Nr. part No. N° art.	PG	M	ZW	L	L1	L2	L3	L4	B	B1	B2	B3	B4	B5	H	H1	H2	S	d
H-B 10 TBFH 21	70040400	21		●	73	27				43	57,8	53				74,8				116
H-B 10 TBFH 29	70040600	29		●																
H-B 10 TBFH M25	79040400		25		73	27				43	57,8	53				74,8				116
H-B 10 TBFH M32	79040600		32																	

Einsätze / Inserts / Inserts: 1.4: H-BE 10 / 1.5: H-EE 18 / 1.7: H-BVE 3 / 1.9: H-DD 42 / 1.10: MC 10

Deckel / Cover / Couvercle: 6.1: H-B 10

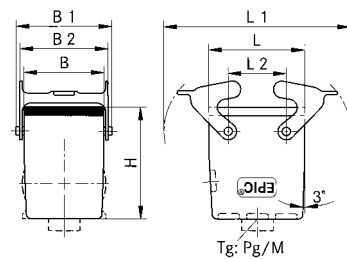
Kabelverschraubung / Cable gland / Presse-étoupe: 5.1: Metr. / 5.2: PG / 5.3: Kit



PG



M



H-B 16

Artikel part article	Art.Nr. part No. N° art.	PG	M	ZW	L	L1	L2	L3	L4	B	B1	B2	B3	B4	B5	H	H1	H2	S	d
H-B 16 TBFH 21	70090200	21		●	93,3	47,5				43	57,8	53				78,8				136,5
H-B 16 TBFH 29	70090400	29		●																
H-B 16 TBFH M25	79090200		25		93,3	47,5				43	57,8	53				78,8				136,5
H-B 16 TBFH M32	79090400		32																	

Einsätze / Inserts / Inserts: 1.4: H-BE 16 / 1.5: H-EE 32 / 1.6: H-BS 6 / 1.7: H-BVE 6 / 1.8: H-D 40 / 1.9: H-DD 72 / 1.10: MC 16

Deckel / Cover / Couvercle: 6.1: H-B 16

Kabelverschraubung / Cable gland / Presse-étoupe: 5.1: Metr. / 5.2: PG / 5.3: Kit

3.2 EPIC® D A - V I N C I H - B

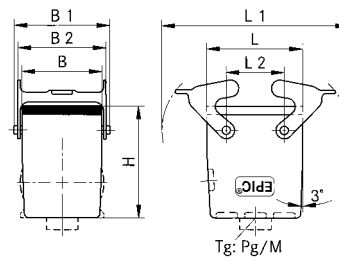
Kupplungsgehäuse / Cable coupler hood / Capot prolongateur



PG



M



EPIC® H-B Gehäuse: Kupplungsgehäuse (Kabeleingang gerade, Querbügel, hohe Bauform)

EPIC® H-B housings: cable coupler hood (top entry, double locking lever, high version)

Boîtiers EPIC® H-B: capot prolongateur (sortie verticale, double levier, version haute)

H-B 24

Artikel part article	Art.Nr. part No. N° art.	PG	M	ZW	L	L1	L2	L3	L4	B	B1	B2	B3	B4	B5	H	H1	H2	S	d
H-B 24 TBFH 21	70140400	21	●		120	74				43	57,8	53				78,8				163
H-B 24 TBFH 29	70140600	29	●																	
H-B 24 TBFH M25	79140400			25	120	74				43	57,8	53				78,8				163
H-B 24 TBFH M32	79140600			32																

Einsätze / Inserts / Inserts: 1.4: H-BE 24 / 1.5: H-EE 46 / 1.7: H-BVE 10 / 1.8: H-D 64 / 1.9: H-DD 108 / 1.10: MC 24

Deckel / Cover / Couverture: 6.1: H-B 24

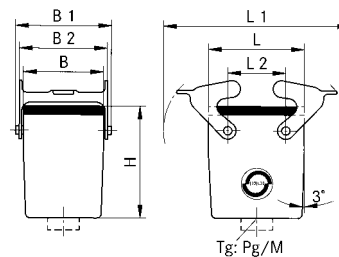
Kabelverschraubung / Cable gland / Presse-étoupe: 5.1: Metr. / 5.2: PG / 5.3: Kit



PG



M



H-B 32

Artikel part article	Art.Nr. part No. N° art.	PG	M	ZW	L	L1	L2	L3	L4	B	B1	B2	B3	B4	B5	H	H1	H2	S	d
H-B 32 TBFH 29	10139500	29	●		93,5	64,5				79	93,8	87,8				97	5			136,5
H-B 32 TBFH M32	19139500			32	93,5	64,5				79	93,8	87,8				97	5			136,5

Einsätze / Inserts / Inserts: 1.4: H-BE 32 / 1.5: H-EE 64 / 1.6: H-BS 12 / 1.8: H-D 80 / 1.9: H-DD 144 / 1.10: 2 x MC 16

Kabelverschraubung / Cable gland / Presse-étoupe: 5.1: Metr. / 5.2: PG / 5.3: Kit